

The Title of the Article

Author 1^{a,b}, Author 2^{c,1} and Author 3^c

^a affiliation1 of author 1

^b affiliation2 of author 1

^c affiliation of authors 2 & 3

(Date of Submission: *dd/mm/yyyy*)

Abstract

The abstract of the article will be within 100 words. The essential features and area of focus of the communication should be mentioned in this part.

Keywords:

Introduction:

A brief introduction including the motivation, review of previous works (with proper citations), structure of the article etc. should be mentioned in this section.

Categories of Articles:

Articles are invited in the following categories.

- a. Brief report of original research work.
- b. Review on current frontiers or historical milestones of the scientific research.
- c. Innovative idea on research and teaching methodology.
- d. Students' project reports.
- e. The interface -- science, environment and society.

Submission of Articles:

The articles should be submitted in the camera ready pdf format along with its source Latex or Word files. Figures are to be inserted after its first mention in the body. The source figure files are to be submitted in jpeg, png, tiff, eps formats. If some special macro or style-class files are required to prepare the camera ready version from the source files, those are to be submitted along with the source files. The submission should consist of one pdf file of the camera ready version along with all the source files with any one of the formats mentioned above. In case of doc/docx format the font style will be Times New Roman with line spacing

¹ Corresponding Author

Single while in case of tex format, the font style will be Roman with single line spacing. In both the formats (doc/docx or tex) the minimum font size in the body will be 12.

Page Layout:

Page size should be chosen as A4 (11.63" × 8.27") with all four side-margins as 1". The page layout should be same with the present document. The charts & figures should be inserted as follows:

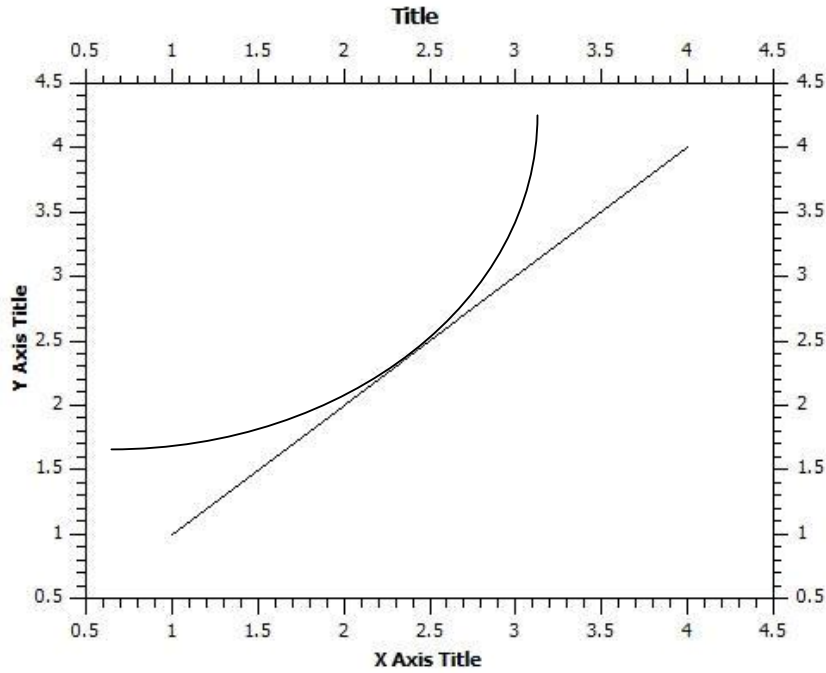


Figure 1: A Sample Plot (Chart)

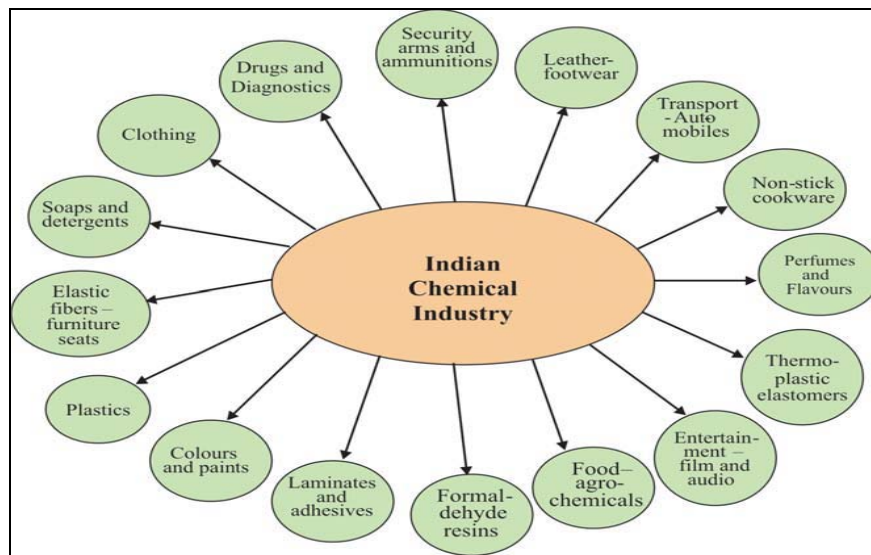


Figure 2: Sample Picture (Flow Chart)

The font size of the text part of charts & figures must not be less than 10.

A sample table is shown below:

Table-1: Table with 3 columns

Column A	Column B	Column C

The minimum font size within the table must not be below 10.

Format of References:

The format of references should be like: “This has been discussed previously^{1,2} and it has been elaborated in several works³⁻⁶.”

References:

1. F. Surname 1 (Year), *Journal Name*, **Vol No.**, Page No.
2. G. Surname 2 and H. Surname 3 (Year), *Journal Name*, **Vol No.**, Page No.
3. I. Surname 4 *et al.* (Year), *Journal Name*, **Vol No.**, Page No.
4. J. Surname 5 (Year), “*Book Title*”, Publisher’s Name, Edition.
5. K. Surname 6 (Year), *Chapter 0* in “*Book Title*”, eds.Editor 1, Publisher’s Name, Edition.
6. L. Surname 7 (Year), in [www.webaddress](#)